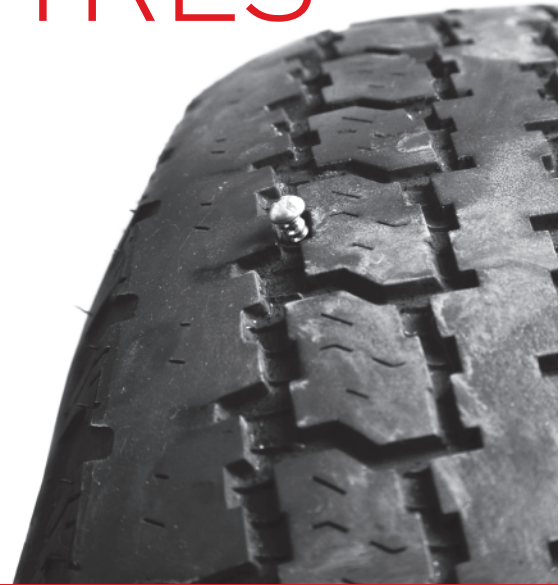


**TYRE DAMAGE AND  
PUNCTURE PROTECTION**

**PROTECT  
YOUR  
TYRES**



NOTE: This brochure is for promotional purposes only. The full terms and conditions as well as exclusions of cover, excess fees and claims limits are contained in the policy wording.

In Partnership with:



**dealerpartnerdirect**

Dealer Partner Direct Ltd,  
Cambridge House, Cambridge Road,  
Harlow, Essex, CM20 2EQ  
Tel: 0844 249 9135  
Fax: 0844 249 9136  
[www.dealerpartnerdirect.com](http://www.dealerpartnerdirect.com)

**Replacing unworn tyres can be expensive.  
Cover all your tyres from punctures, accidental  
or malicious damage.**

# TYRE INSURANCE

## GET PEACE OF MIND WITH THE DEALER PARTNER DIRECT TYRE INSURANCE

Replacing unworn tyres can be expensive. Cover all your tyres from punctures, accidental or malicious damage. The Dealer Partner Direct Tyre Insurance is designed to cover the cost of having to repair or replace tyre(s) that have suffered accidental or malicious damage. Dealer Partner Direct's Insurance covers all 5 tyres, including the spare, and starts from the day you take out the insurance.

### DEALER PARTNER DIRECT TYRE INSURANCE WILL COVER REPAIR OR REPLACEMENT COSTS AS A RESULT OF:

- |  |
|--|
| • <b>Punctures</b>                           |
| • <b>Malicious damage e.g. slashed tyres</b> |
| • <b>Damage to tyres</b>                     |
| • <b>Pothole damage</b>                      |
| • <b>Kerb damage</b>                         |

Your tyres will be fully inspected prior to the commencement of the insurance policy and must meet the criteria as defined in the policy wording.

## INSURANCE TERMS AND CONDITIONS:

- Every tyre must have a minimum of 2mm of tread across one quarter of the tyre width. Maximum insured tyre width 22.
- Every tyre must be E marked i.e. up to European standards for usage.
- You must own the vehicle being insured or be responsible for its tyre maintenance and repair.
- The vehicle must be less than 7 years or 80,000 miles at the start of the tyre insurance and it must be maintained in a roadworthy condition.
- Dealer Partner Direct authorisation should be sought prior to commencing tyre repairs or replacement.

